

WELCOME to the Child Care Provider Informational Session!

Allen County Job & Family Services

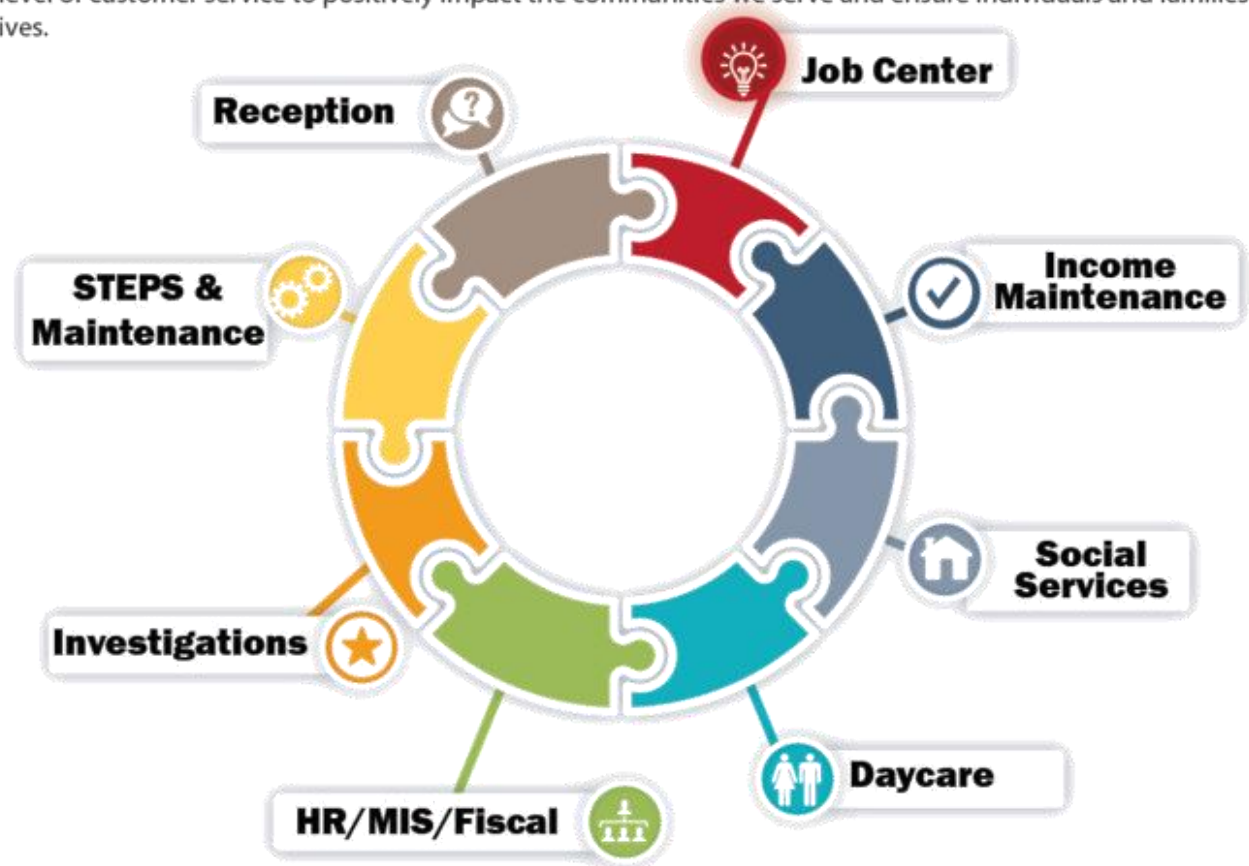
Our Mission and Vision

Our Mission

Allen County Job and Family Services, with support of regional employers, economic development and community partners, is committed to building a stronger community by promoting self-sufficiency. We are dedicated to assisting Allen County families and individuals achieve their highest level of stability and independence through career development and supportive services.

Our Vision

Like the pieces of a puzzle, every part of Allen County Job and Family Services plays a crucial role in the success of our mission and to ultimately assist in filling the workforce gap of Allen County and assist our clients to self sufficiency. No matter the division, unit or individual position, every employee is committed to the highest level of customer service to positively impact the communities we serve and ensure individuals and families find the resources needed to improve lives.



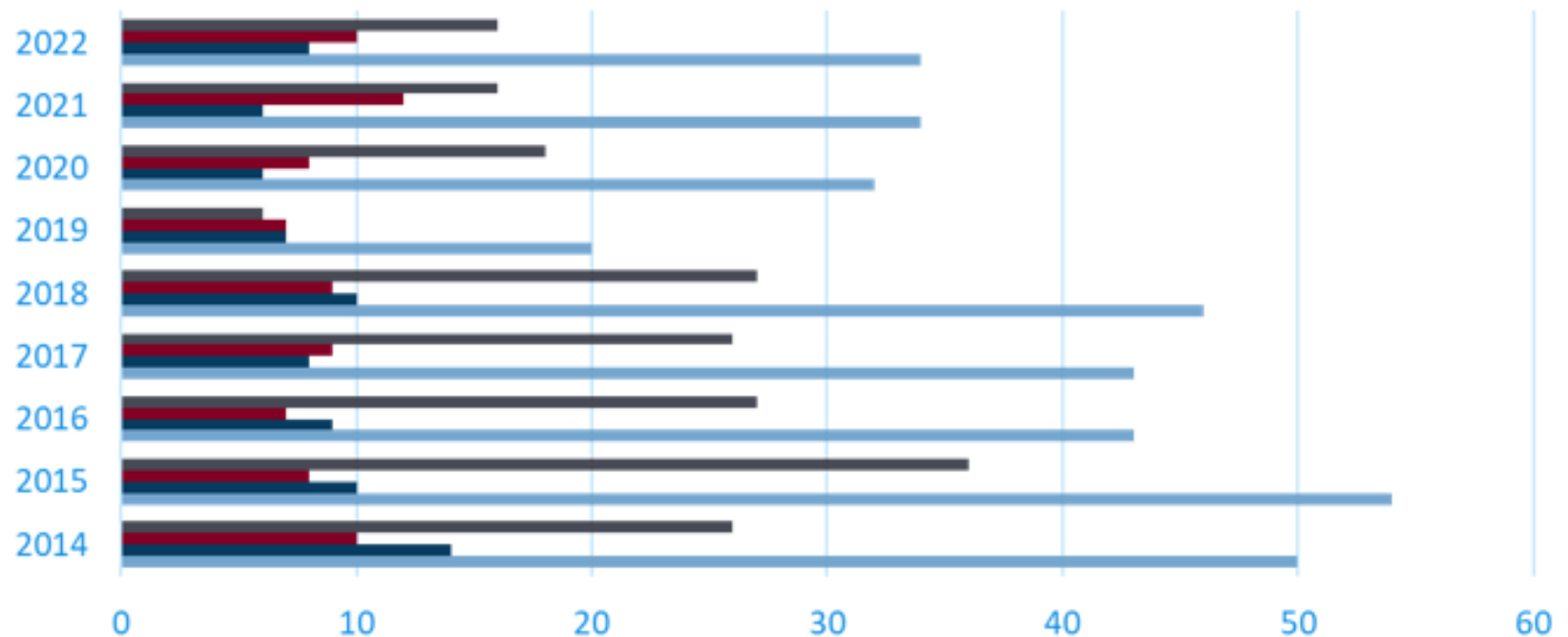
What is a Licensed Child Care Provider?

- A Child Care Provider is an individual who is licensed and approved to provide care, and ensure the well-being of children under their care, in a safe and appropriate manner.
- Licensed Child Care Provider is paid based on a set rate for Publicly Funded Child Care children
 - Families apply and are deemed eligible for Publicly Funded Child Care (PFCC) through their County Job and Family Services
 - **Publicly Funded Child Care (PFCC)** is for eligible parents where the State pays for full or partial child care costs while they work, attend school, or job training. Some families have a co-pay amount.

Need for Allen County Providers

- **The number of Child Care Providers in Allen County has decreased over the past 8 years**
 - *Trends on next slide*
- **Child Care applications for Publicly Funded Child Care assistance continues to increase**
 - Applications tripled in September 2022 in comparison to September 2021
- **JFS/OhioMeansJobs is recruiting and marketing for new Child Care Providers to fulfill the need**
- **Increasing need in workforce**
 - Currently over **2,500** job openings in Allen County
 - Child care is needed so parents can get back into the workforce

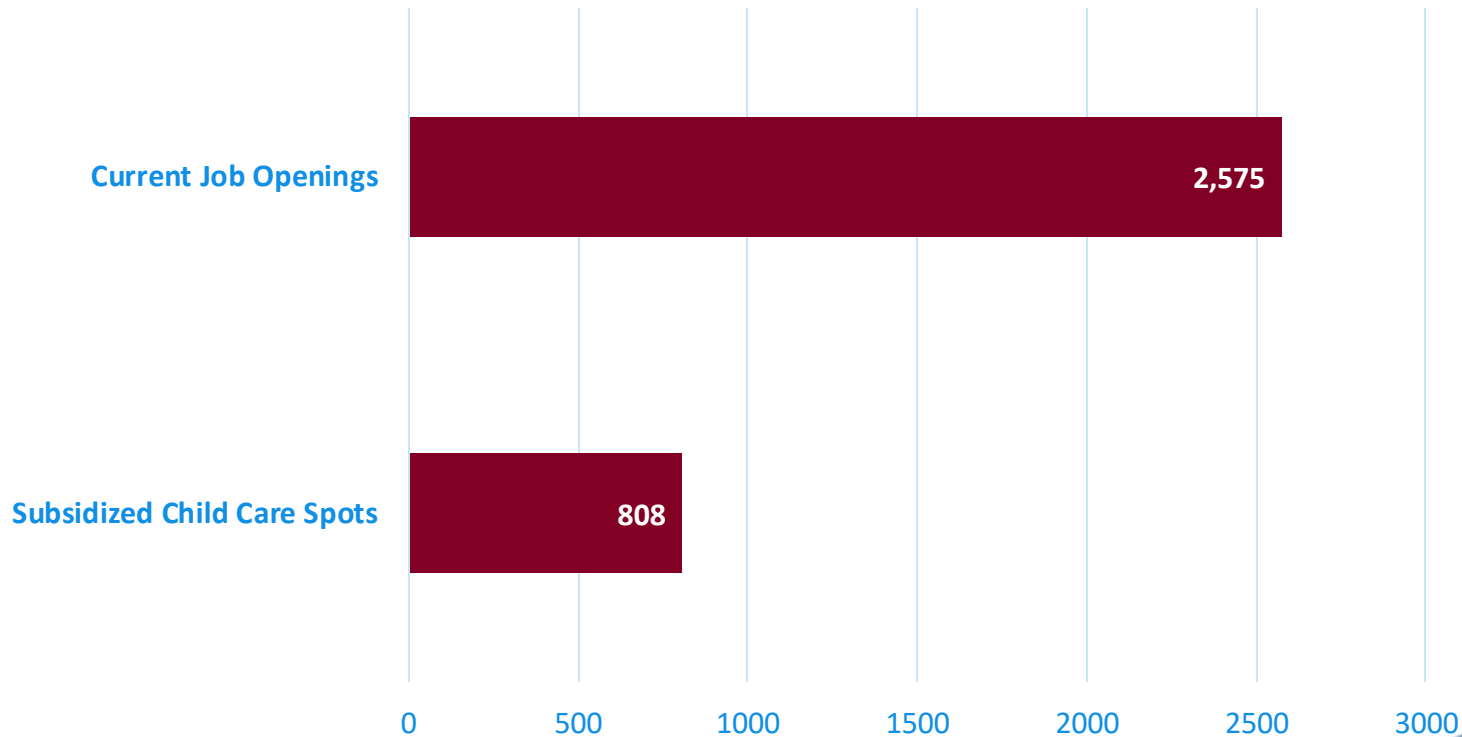
Local Provider Trends



	2014	2015	2016	2017	2018	2019	2020	2021	2022
Centers	26	36	27	26	27	6	18	16	16
Type A	10	8	7	9	9	7	8	12	10
Type B	14	10	9	8	10	7	6	6	8
Total	50	54	43	43	46	20	32	34	34

Impact on our Local Workforce

Allen County



Allen County

A proud partner of the
American Job Center network



Types of Child Care Providers

- **Type B - Provider's Residence**
 - Permanent residence of the provider in which child care is provided for 1 to 6 children at one time and in which no more than three children are under two years of age
- **Type A - Provider's Residence**
 - Permanent residence of the administrator in which child care or publicly funded child care is provided for 7 to 12 children at one time
- **Child Care Centers**
 - Any place child care is provided for 13 or more children at one time that is not the permanent residence of the licensee or administrator

Benefits of being a Provider

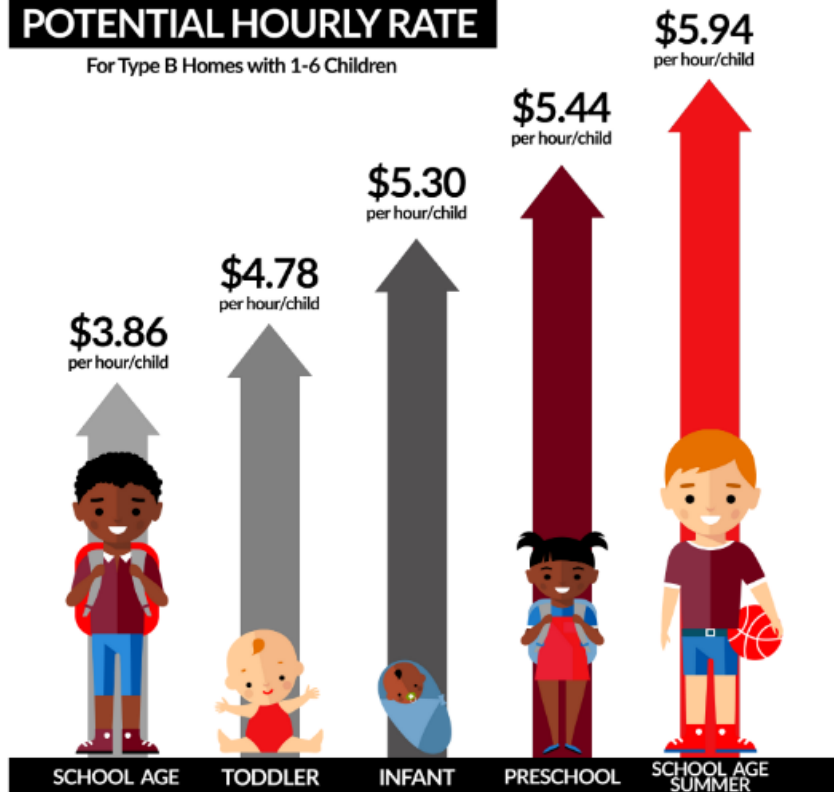
- Being a business owner
 - Self-employment
- Ability to work in your own home and flexibility in your work schedule
- Ability to stay home with your own children and earn an income
- Allowing parents to get back into the workforce and grow our community
- Ability to make high wages
- Providing a safe and caring space for children in our community



High Wage Opportunities!

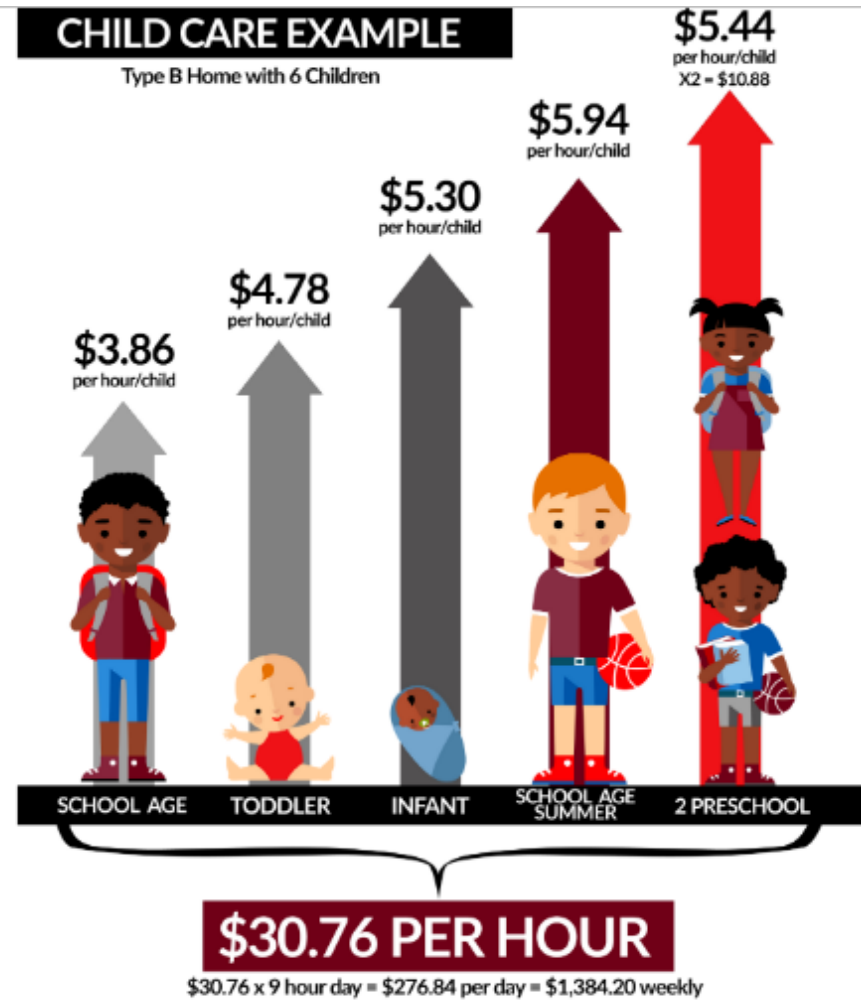
POTENTIAL HOURLY RATE

For Type B Homes with 1-6 Children



CHILD CARE EXAMPLE

Type B Home with 6 Children



Support Team

Partnership between ACJFS and YWCA

- **Allen County Department of Job and Family Services**

- One-on-one assistance and guidance through the provider licensure process
- Potential assistance with start-up costs
 - Background Checks
 - Required Training Sessions
 - Start-up Kit provided
 - Stipend available after 30 days of operation

- **YWCA Child Care Resource & Referral**

- One-on-one assistance and guidance through the provider licensure process
 - Information Session
 - Required Training Sessions
 - Educational and Quality Resources to start-up and maintain child care business

Process to become a Provider

- 1) Create an account in the Ohio Professional Registry (OPR)
- 2) Complete Pre-Licensing Training
 - First Aid & CPR
 - Communicable Disease
 - Child Abuse
- 3) Gather needed documents (Type B):
 - Verification of High School Diploma or GED
 - Medical Statement - able to provide care
 - Plan of Operation for Child Care
 - Adjudicated Delinquent Form
- 4) Create an OCLQS (Ohio Child Licensing and Quality System) Portal Account & Submit an Application
 - \$25 for In-Home Providers
 - \$50 for Centers
- 5) Obtain Background Checks – BCI and FBI
 - For all household members
- 6) Pre-License Inspection – by ACJFS
- 7) Utilize Job & Family Services and the YWCA for support and assistance!



The YWCA Child Care Resource and Referral supports community members interested in opening a child care program by providing assistance and resources directly related to starting and managing a successful child care business.

We offer assistance by:

- Providing training and one-on-one coaching to assist with the navigation of the licensing process **(as required by the state)**
- Offering low-cost or free trainings in topics such as child development, business operations and fiscal practices
- Furnishing educational materials to support high quality learning experiences
- Supporting increased income for subsidized children through becoming Step Up to Quality rated

For individualized support, call **Denise Johnston** at **419-225-5465** to schedule an appointment



Additional Resources

Your primary resources are Allen County JFS and YWCA!

We are here to help!

- Resource links will be available on omjallen.com/childcare
- Child Care Tutorials
 - https://www.odjfs.state.oh.us/tutorials/ChildCare/HowtoApplyFCC2017/presentation_html5.html
- OCLQS Job Aids:
 - www.earlychildhoodohio.org/sutq/Web-Training
- ODJFS Child Care Policies
 - <https://emanuals.jfs.ohio.gov/>
- Forms Central:
 - www.Odjfs.state.oh.us/forms

Questions?

Allen County Job & Family Services Contact:

Kelly Pratt Kelly.Pratt@jfs.ohio.gov 419-999-0291

YWCA Child Care Resource & Referral Contact:

Denise Johnston djohnston@ywcanwo.org 419-225-5465

Please complete survey prior to leaving to provide the best customer service to you!



eliminating racism
empowering women
ywca
Northwest Ohio

Job·Family
— SERVICES —
Allen County